

SONY

**Audio Products
Service Bulletin**

Sony Service Company - Technical Services
A Division of Sony Corporation of America
Sony Drive, Park Ridge, New Jersey 07656

Model: WM-D6C, TC-D6C

No. 166

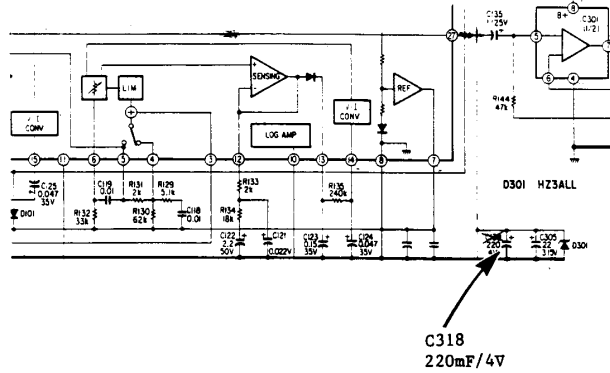
Subject: Schematic Diagram Error, C318

Date: June 20, 1991

Symptom: C318 is referenced incorrectly on the schematic.
(**)

Solution: Please make the following correction on Page 24 of your Service Manual and Page 8 of Supplement #1.

Reference Number		Description	Part Number
Incorrect	Correct		
C138	C318	220 mF./4v Elec. Cap	1-123-827-00



CSA-11 Walkman